

General Specifications

MODEL MS2 POT Transmitter

JUXTA

Model MS2 plug-in type POT Transmitter receives signal change in potentiometer resistance and converts it into isolated DC current or voltage signal.

- 2000V AC high voltage proof is available upon request

Input/Output Specifications	
Input signal	Resistance change by potentiometer (3 wire type)
Total resistance value	100~2000Ω
Measuring span	80~2000Ω (More than 50% of total resistance)
Zero elevation	Within 50% of total resistance
Permissible input conductor resistance	Less than 10Ω per cable (whereas resistance value of each cable is equal)
Output signal	DC current or voltage signal
Permissible load resistance	
Output range	Output Range
4~20mA DC : Less than 750Ω	0~10mV DC : More than 250kΩ
2~10mA DC : " 1500Ω	0~100mV DC : " 250kΩ
1~5mA DC : " 3000Ω	0~1V DC : " 2kΩ
0~20mA DC : " 750Ω	0~10V DC : " 10kΩ
0~16mA DC : " 900Ω	0~5V DC : " 2kΩ
0~10mA DC : " 1500Ω	1~5V DC : " 2kΩ
0~1mA DC : " 15kΩ	-10~+10V DC : " 10kΩ
Zero point adjustment range	±10% of span
Span adjustment range	±10% of span
Standard Performance	
Accuracy rating	Within ±0.1% of span (whereas total resistance value ≤ 2kΩ) Within ±0.5% of span (whereas 2kΩ < total resistance value ≤ 10kΩ)
Response Speed	150ms 63% response (10~90%)
Burnout	Specify UP, DOWN, OFF Burnout time is less than 60 seconds
Isulation resistance	100MΩ (at 500V DC) between input~output~power supply~ground
Voltage withstand	1500V AC/1 minute between input~output~power supply~ground
Temperature range	0~50°C
Humidity range	5~90%RH (no condensation)
Power supply voltage	85~264V AC 47~63Hz or 12~48V DC
Effect of power supply voltage fluctuation	Less than ±0.1% of span for 85~264V AC or 12~48V DC
Effect of change in ambient temperature	Less than ±0.2% of span for 10°C change
Current dissipation	24V DC 155mA
Power dissipation	100V AC 8.5VA, 200V AC 13.0VA
Mounting, Shape and Accessories	
Material	Case ABS plastic
Mounting method	Wall or DIN rail mounting (More than 5mm interval is required for access mounting)
Connecting method	M3.5 screw terminal
External dimension	85x50x123mm (HxWxD) (including socket)
Weight	Body : approx. 250g, Socket : approx. 60g
Accessoires	Spacer 1 (Use for DIN rail mounting)

MODEL _____ MS2-□□-□*A/B□

INPUT _____

1 : Specify within range of total resistance value (100~2000Ω)

0 : (CUSTOM ORDER) Total resistance value 2kΩ~10kΩ

OUTPUT _____

A : 4~20mA DC	1 : 0~10mV DC
B : 2~10mA DC	2 : 0~100mV DC
C : 1~5mA DC	3 : 0~1V DC
D : 0~20mA DC	4 : 0~10V DC
E : 0~16mA DC	5 : 0~5V DC
F : 0~10mA DC	6 : 1~5V DC
G : 0~1mA DC	7 : -10~+10V DC
Z : (CUSTOM ORDER)	0 : (CUSTOM ORDER)
Current Signal	Voltage Signal
Refer Table 1	Refer Table 1

POWER SUPPLY _____

1 : 12~48V DC

2 : 85~264V AC

BURNOUT _____

U : UP

D : DOWN

N : OFF

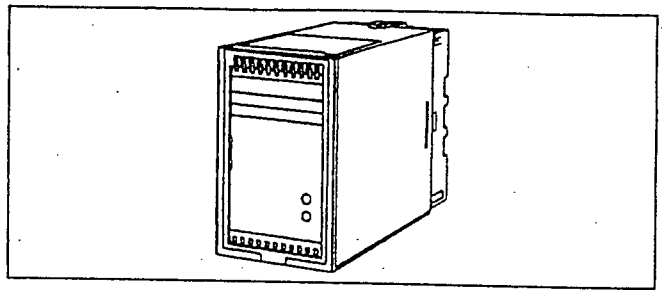
ORDERING INFORMATION

- Model Code : (Example) MS2-1A-2*A/BU
- Total Resistance : (Example) 2000Ω
- Input Range : (Example) 0~1500Ω

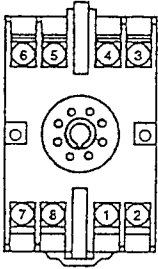
CUSTOM ORDER SPECIFICATIONS

Table 1 Manufacturable Range

Total Resistance	100Ω~10kΩ	
Span	80Ω~10kΩ (More than 50% of total resistance)	
Zero Elevation	Within 50% of total resistance	
	Current Signal	Voltage Signal
Output Range	0~24mA DC	-10~+10V DC
Span	1~24mA DC	10mV~20V DC
Zero Elevation	0~200%	-100~+200%

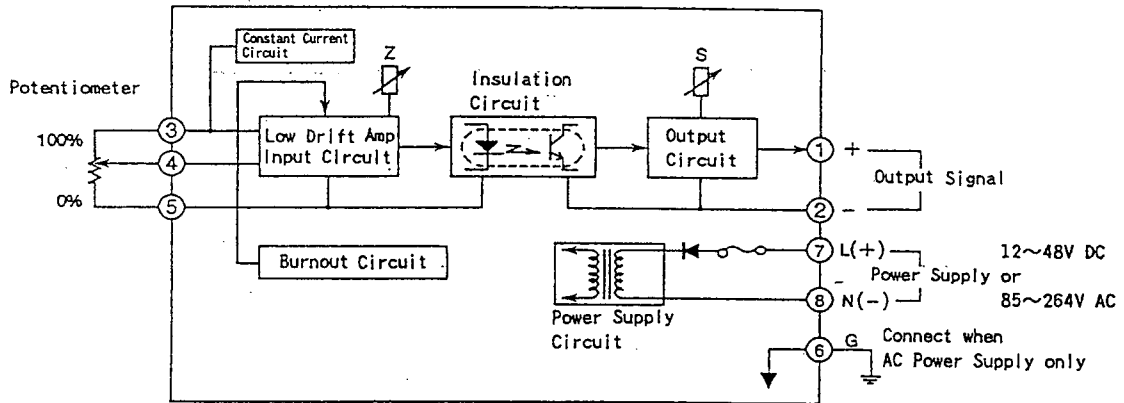


TERMINAL ARRANGEMENT

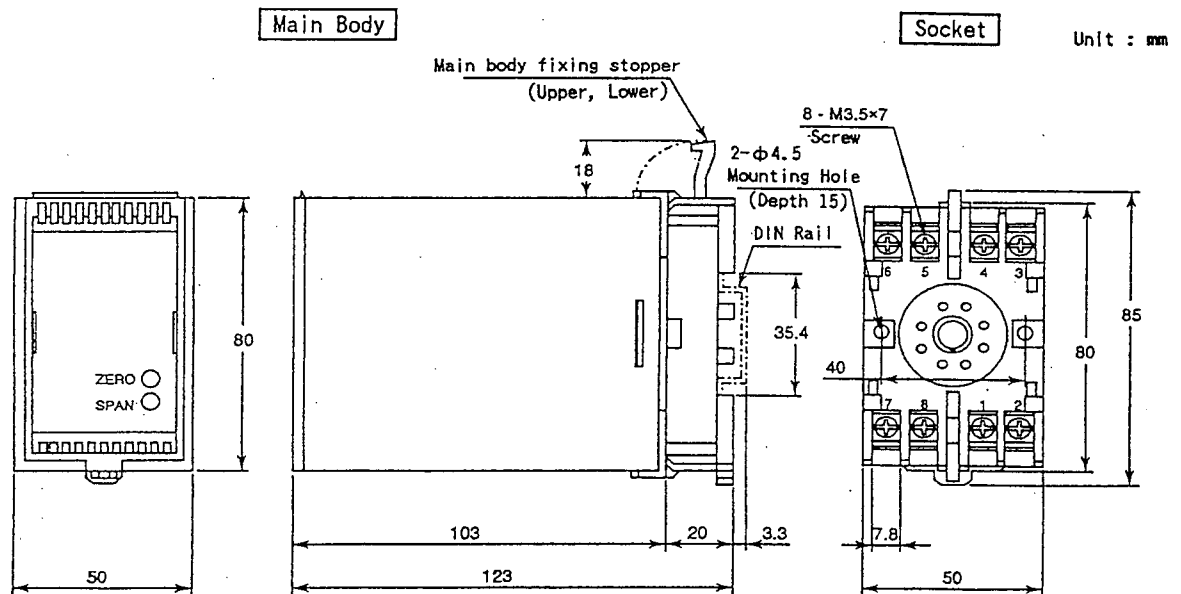


1	OUTPUT (+)
2	OUTPUT (-)
3	INPUT (1)100%
4	INPUT(2) CENTER
5	INPUT (3)0%
6	GND (G)
7	SUPPLY (L+)
8	SUPPLY (N-)

BLOCK DIAGRAM



EXTERNAL DIMENSION



Subject to change without notice for grade up quality and performance